

Hereinafter Radio Systems Corporation, Radio Systems PetSafe Europe Ltd., Radio Systems Australia Pty Ltd. and any other affiliate or Brand of Radio Systems Corporation may be referred to collectively as "We" or "Us".

IMPORTANT SAFETY INFORMATION

Explanation of Attention Words and Symbols used in this guide



This is the safety alert symbol. It is used to alert you to potential personal injury hazards. Obey all safety messages that follow this symbol to avoid possible injury or death.

WARNING

WARNING indicates a hazardous situation which, if not avoided, could result in death or serious injury.

CAUTION

CAUTION, used with the safety alert symbol, indicates a hazardous situation which, if not avoided, could result in minor or moderate injury.

NOTICE

NOTICE is used to address practices not related to personal injury.

WARNING

When children are present in the home, it is important to consider the pet door during child proofing activities, the pet door may be misused by a child resulting in the child accessing potential hazards that may be on the other side of the pet door. Purchasers/Homeowners with swimming pools should ensure that the pet door is monitored at all times and that the swimming pool has adequate barriers to entry. If a new hazard is created inside or outside of your home, which may be accessed through the pet door, Radio Systems Corporation recommends that you properly guard access to the hazard or remove the pet door. The closing panel or lock, if applicable, is provided for aesthetic and energy efficiency purposes and is not intended as a security device. Radio Systems Corporation will not be liable for unintended use and the purchaser of this product accepts full responsibility for oversight of the opening it creates.

- Power Tools. Risk of severe injury; follow all safety instructions for power tools. Be sure to always wear safety goggles and other proper safety equipment.
- For safety reasons it is not recommended to fit this product to glass.

CAUTION

The user, prior to installation, must become familiar with all building codes that may affect the installation of the pet door and determine, along with a licensed contractor, its suitability in a given installation. This pet door is not a fire door. It is important for the owner and contractor to consider any risks that may be present inside or outside of the pet door, and any risks that may be created by subsequent changes to your property and how they may relate to the existence and use, including misuse of the pet door.

- Be sure to use heavy scissors for cutting the tunnel extensions.
- If cutting a metal surface, be aware of sharp edges to prevent injury.

NOTICE

Keep these instructions with important papers; be sure to transfer these instructions to the new owner of the property.

- If painting the pet door, it is recommended to paint it prior to installation. For best results, use a primer for plastics before applying paint.
- If homeowner's door or other application is not level, the pet door must be marked level to swing properly.
- When applying cutting template there should be a minimum of 8 cm between the bottom and sides of the door and the outer edge of the template to maintain the structural integrity of the door.
- Make sure there is nothing behind the door where you will be drilling the holes or cutting out opening.
- Use a manual screwdriver to tighten screws. Do not overtighten. Overtightening can strip the screws or warp the pet door frame.
- Unauthorised changes or modifications may void the user's authority to operate this equipment and void the warranty.

SAVE THESE INSTRUCTIONS

Your PetSafe® Pet Door...

Thank you for choosing the PetSafe® Brand. You and your pet deserve a companionship that includes memorable moments and a shared understanding together. Our products and training tools enhance the relationship between pets and their owners. **If you have any questions about our products or training your pet, please visit our website at www.petsafe.net or contact our Customer Care Centre. For a listing of Customer Care Centre telephone numbers, visit our website at www.petsafe.net.**

To get the most protection out of your warranty, please register your product within 30 days at www.petsafe.net. By registering and keeping your receipt, you will enjoy the product's full warranty and should you ever need to call the Customer Care Centre, we will be able to help you faster. Most importantly, your valuable information will never be given or sold to anyone. Complete warranty information is available online at www.petsafe.net.

Small



Cat



Small Dog



Closing panel



Fits wooden doors



Fits brick walls



Fits PVC/uPVC/
Metal



Tunnel included is suitable for most thickness of doors

Medium



Medium Dog



Closing panel



Fits wooden doors



Fits brick walls



Fits PVC/uPVC/
Metal



Tunnel included is suitable for most thickness of doors

Large



Large Dog



Closing panel



Fits wooden doors



Fits brick walls



Fits PVC/uPVC/
Metal



Tunnel included is suitable for most thickness of doors

All PetSafe® pet doors are suitable to fit any door, wall or partition although additional materials and competent DIY skills may be required.

Replacement flaps available online

EN

FR

NL

ES

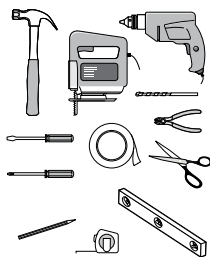
IT

DE

Before installing your pet door please read the following step-by-step instructions carefully.

Tools required

- Hammer
- Jigsaw or Keyhole Saw*
- Drill
- 13 mm (1/2") Drill Bit
- Wire Cutters
- Slotted & Phillips Screwdrivers
- Tape Measure
- Masking or Painter's Tape
- Pencil
- Scissors
- Safety Equipment
- Duct Tape (Optional)
- Silicone Adhesive (Optional)
- Sandpaper (Optional)



*use appropriate blade type and length. Example: A metal door would require a blade for metal.

Measurement and marking

Measure the belly height of your pet (**Fig. 1**). Mark this measurement on the outside of your door or wall and draw a straight horizontal line (**Fig. 2**). Please bear in mind that this line will eventually be the bottom of the hole you will cut in your door or wall and that the frame of the pet door will be slightly lower.

FIG. 1

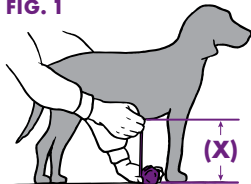
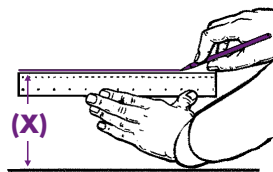


FIG. 2



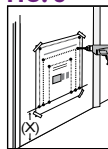
Cutting a hole for your pet door

The hole that you cut will depend on the thickness of the surface you are installing the pet door in and the size of pet door you have purchased (**Chart 1**). Please note that additional tools, materials and competent DIY skills may be required.

CHART 1

Cut-out Size Guide		
Pet Door Model	Wall/Door < 54 mm thick (Use Cutting Template - A)	Wall/Door ≥ 54 mm thick (Use Cutting Template - B)
Small	258 mm H x 165 mm W	258 mm H x 142 mm W
Medium	360 mm H x 241 mm W	360 mm H x 216 mm W
Large	489 mm H x 292 mm W	464 mm H x 269 mm W

FIG. 3



FOR SAFETY REASONS IT IS NOT RECOMMENDED TO FIT THIS PRODUCT TO GLASS.

Using the correct template according to **Chart 1**, position the template base at belly height marked on door (**X**). Drill holes at appropriate corners as indicated (**Fig. 3**).

NOTICE: When applying cutting template there should be a minimum of 8 cm between the bottom and sides of your door and the outer edge of the cutting template to maintain the structural integrity of the door.

FIG. 4

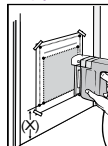
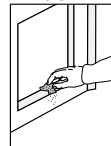
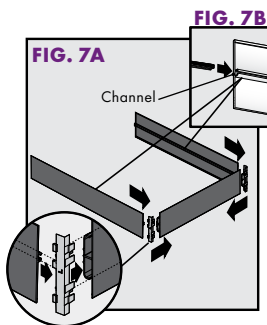
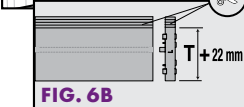
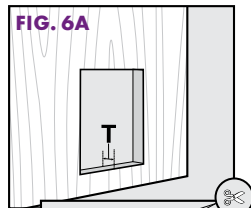


FIG. 5



Holding the jig or key-hole saw level, cut along the appropriate cutting line (**Fig. 4**). Smooth out any rough edges with sandpaper (**Fig. 5**).

Fitting the tunnel



Measure the thickness (**T**) of your door or wall. Note this measurement (**Fig. 6A**). Cut the grooved side of the plastic tunnel pieces and tunnel supports to equal the thickness (**T**) of your door + 22 mm (**Fig. 6B**). For thicknesses (**T**) greater than 54mm, the tunnel provided cannot be used.

Place cut edge of bottom tunnel piece toward you with "T"-shaped rib side facing up. Snap left tunnel support into left end. Snap right tunnel support into right end. With weather strip channels facing in, align uncut edge (side with one rib) of side tunnel pieces with uncut edge of supports. Slide channels of side tunnel pieces onto tabs

of tunnel supports to form a "U"-shape (**Fig. 7A**).

Slide weather strips into channels of side tunnel pieces (**Fig. 7B**). Weather strips should face inside. Weather strips may need trimming.

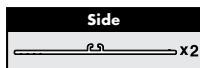
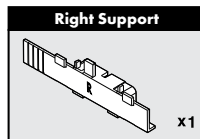
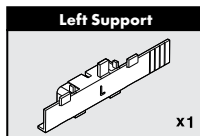
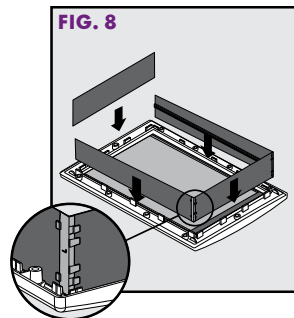


FIG. 8

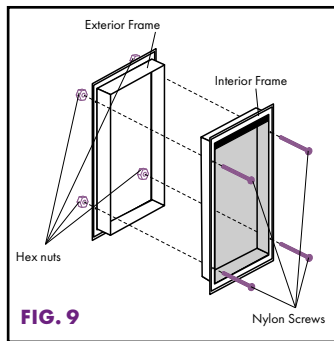


Snap uncut edge (side with one rib) of assembled tunnel pieces inside bottom and side tabs of interior frame (frame with 2 flaps). The bottom of tunnel should be at bottom of interior frame. Weather strips and ribbed sides (uncut edges) should face flap. Snap the uncut edge (side with one rib) of top tunnel piece inside top tabs of interior frame. Uncut edge (side with one rib) of top tunnel piece should face flap. Tunnel pieces may need trimming to meet at corners (**Fig. 8**).



OPTIONAL: Use duct tape in the corners of tunnel to help secure in place and to improve weather resistance. Cut off any excess tape.

Fitting the pet door



Helpful Tip: A spare pair of hands are useful at this point to hold pieces together.

Place interior frame with tunnel assembly into cut-out. Next place exterior frame into cut-out, inserting tunnel inside tabs of frame. Hold frame together. Insert nylon screws through holes in interior frame into holes in exterior frame. Thread a hex nut onto each screw (**Fig. 9**).

If you are installing into a wall or door ≥ 54 mm thick, you will screw into the wall on the interior and also the exterior sides (screws not included).

Start screws, but do not tighten at this time. Place foam strip between interior frame and your wall or door for additional insulation. Cut off any excess.

Helpful Tip: Use a screwdriver to tuck the foam strip under as you work around the frame.

Use a screwdriver to evenly tighten screws through-out frame while keeping tunnel in position.

Helpful Tip: Look through flap opening to check if tunnel is in position as you tighten the screws.

NOTICE: Use a manual screwdriver to tighten screws. Do not overtighten. Overtightening can strip the screws or warp the pet door frame.

Use wire cutters to trim screws flush with exterior frame.

OPTIONAL: Apply silicone adhesive around the exterior frame (frame with one flap) and inside pet door threshold where tunnel meets the frame for improved weather resistance.

Optional



Fitting and adjusting the flexible flap

During extreme changes in weather, vinyl flaps can shrink during cold months and expand in warmer months. Easily replace or adjust to ensure a snug fit during seasonal changes.

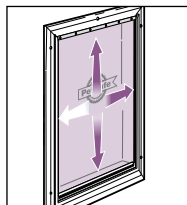


FIG. 10

The flexible flap is adjustable to fit into frame correctly.

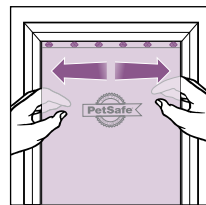


FIG. 11

Horizontal adjustment

Move flap left or right to adjust position. Tighten screws when correct.

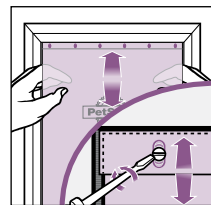


FIG. 12

Vertical adjustment

Move flap up or down to adjust position. Tighten screws when correct.

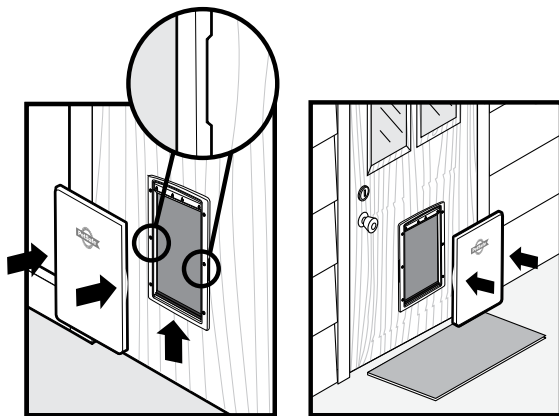
Your PetSafe® pet door is now ready to use.

Using the closing panel

The closing panel snaps onto the interior frame of the Extreme Weather Pet Door. It is useful during inclement weather or to keep your pet from using the pet door.

To use the closing panel, hold side handles and first slide bottom into place. Then push next to handles to snap sides of closing panel into slots on interior frame. To remove, hold side handles while pushing center of closing panel with thumbs.

An additional closing panel (sold separately) can be used on the exterior frame of the Extreme Weather Pet Door for improved weather resistance. Visit our website at www.petsafe.net or call our Customer Care Centre for more information.



Training your pet to use the pet door

Most pets will learn to use the pet door almost at once but there are a few who may be a little nervous at first. The following tips will help your pet to take full advantage of the outdoor freedom and indoor comfort - which you want for your pet - and which your new pet door provides.

The most important rule is to be patient with your pet. Don't be in a hurry. Let your pet work out for itself that it can go in and out of doors. Don't force it through the flap or it may become frightened.

Many pet owners install pet doors when they move house. If this applies to you, make sure that your pet is familiar with his or her surroundings before you fit the pet door. Take it on supervised trips outdoors on a lead and make sure it also feels secure and comfortable in its new indoor environment. Cats especially can develop long lasting fears in unfamiliar surroundings.

Once you have installed your pet door, leave the flap open for some time. You can do this by using a long strip of masking tape; open the flap and use the tape to keep it held open by fixing the other end of the tape to the surface above. Make sure that the fixing is secure so that the flap can not fall down accidentally. Let your pet become familiar with it and go in and out freely.

Establish a motive for your pet to use the door. For cats, a good one is food. First feed the cat near the door, inside and then near the door outside. Repeat as often as you need to. Most cats, especially kittens, also have a strong urge for freedom, perhaps to hunt. Cats are also social creatures - they enjoy the company of other cats. This can be another reason for them to explore outside.

Dogs can be trained to use the pet door in a matter of hours. Dogs respond to encouragement, repetition and especially play, so why not use the door as part of a game? E.g. throwing a ball through the pet door. Pat and congratulate the dog when the pet door is used appropriately. Repeat several times congratulating the dog every time he uses the pet door.

If this is something new to your pet, it may take some patience to teach your pet how to use it. When your pet makes progress give them a lot of praise - they've earned it!

Replacing the Flaps

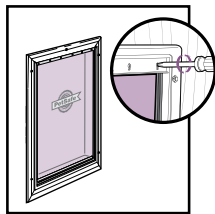


FIG. 13

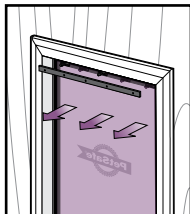


FIG. 14

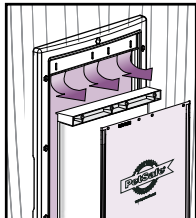


FIG. 15

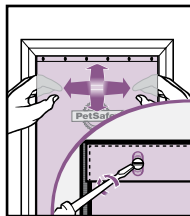


FIG. 16

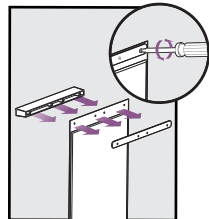


FIG. 17

1. Remove screws from the interior frame of the pet door (**Fig. 13**).
2. Remove bar and vinyl flap (**Fig. 14**).
3. If replacing the insulated flap, remove flap clamp with attached insulated flap (**Fig. 15**). Remove screws, insulated flap and backing plate from back of flap clamp. Insert new insulated flap between flap clamp back and backing plate. Replace and tighten screws (**Fig. 16**).
4. Insert new vinyl flap and position horizontally and vertically to fit into door frame. Replace existing bar and tighten screws in place (**Fig. 17**).

Replacement flaps are available online at www.petsafe.net or by contacting our Customer Care Centre. For a listing of Customer Care Centre telephone numbers, visit our website at www.petsafe.net.

Cleaning the pet door

Your pet door is constructed in the highest quality material with a toughened flap and has been designed to last for many years. To maintain its appearance, occasional wiping with a damp cloth is all that is necessary.

Terms of Use and Limitation of Liability

1. Terms of Use

Use of this Product is subject to your acceptance without modification of the terms, conditions and notices contained herein. Use of this Product implies acceptance of all such terms, conditions and notices. If you do not wish to accept these terms, conditions, and notices, please return the Product, unused, in its original packaging and at your own cost and risk to the relevant Customer Care Centre together with proof of purchase for a full refund.

2. Proper Use

If you are unsure whether this Product is appropriate for your pet, please consult your veterinarian or certified trainer prior to use. Proper use includes, without limitation, reviewing the entire Operating Guide and any specific safety information statements.

3. No Unlawful or Prohibited Use

This Product is designed for use with pets only. Using this Product in a way that is not intended could result in violation of Federal, State or local laws.

4. Limitation of Liability

In no event shall Radio Systems Corporation or any of its associated companies be liable for (i) any indirect, punitive, incidental, special or consequential damage and/or (ii) any loss or damages whatsoever arising out of or connected with the misuse of this Product. The Purchaser assumes all risks and liability from the use of this Product to the fullest extent permissible by law.

5. **Modification of Terms and Conditions**

Radio Systems Corporation reserves the right to change the terms, conditions and notices governing this Product from time to time. If such changes have been notified to you prior to your use of this Product, they shall be binding on you as if incorporated herein.

Warranty

Three Year Non-Transferrable Limited Warranty

This Product has the benefit of a limited manufacturer's warranty. Complete details of the warranty applicable to this Product and its terms can be found at www.petsafe.net and/or are available by contacting your local Customer Care Centre.

Europe – Radio Systems PetSafe Europe Ltd., 2nd Floor, Elgee Building, Market Square, Dundalk, Co. Louth, A91 YR9X Ireland

Canada – Radio Systems Corporation, 10427 PetSafe Way, Knoxville, TN 37932 USA

Australia/New Zealand – In compliance with the Australian Consumer Law, Warranties Against Defects, effective January 1, 2012, warranty details of this Product are as follows: Radio Systems Australia Pty Ltd. (hereinafter referred to as "Radio Systems") warrants to the original retail purchaser, and not any other purchaser or subsequent owner, that its Product, when subject to normal and proper residential use, will be free from defects in material or workmanship for a period of three (3) years from the purchase date. An "original retail consumer purchaser" is a person or entity who originally purchases the Product, or a gift recipient of a new Product that is unopened and in its original packaging. When serviced by Radio Systems Customer Service, Radio Systems covers labour and parts for the first three years of ownership; after the first three years, a service or upgrade charge will apply relative to replacement of the Product with new or refurbished items at Radio Systems' sole discretion.

The limited warranty is non-transferable and shall automatically terminate if the original retail consumer purchaser resells the Radio Systems Product or transfers the property on which the Radio Systems Product is installed. This

Limited Warranty excludes accidental damage due to dog chews; lightning damage; or neglect, alteration, and misuse. Consumers who purchase products outside of Australia, New Zealand, or from an unauthorised dealer will need to return the Product to the original place of purchase for any warranty issues.

Please note that Radio Systems does not provide refunds, replacements, or upgrades for change of mind, or for any other reason outside of these Warranty terms.

Claims Procedure: Any claim made under this Warranty should be made directly to Radio Systems Australia Pty Ltd. Customer Care Centre at:

Radio Systems Australia Pty Ltd.

PO Box 7266, Gold Coast Mail Centre QLD 9726, Australia

Australia Residents: 1800 786 608

New Zealand Residents: 0800 543 054

Email: aus-info@petsafe.net

To file a claim, a proof of purchase must be provided. Without a proof of purchase, Radio Systems will not repair or replace faulty components. Radio Systems requests the Consumer to contact the Radio Systems Customer Care Centre to obtain a Warranty Return number, prior to sending the Product. Failure to do so may delay in the repair or replacement of the Product.

If the Product is deemed to be faulty within 30 days from date of original purchase, Radio Systems will organise for a replacement to be sent in advance of returning the faulty Product. A Post Bag will be included with the replacement Product for the return of the faulty Product. The Product must be returned within 7 days of receiving the replacement. If the Product is deemed to be faulty after 30 days from the date of original purchase, the consumer will be required to return the Product to Radio Systems at the consumer's own expense. Radio Systems will test and replace the faulty unit or its components and return to the consumer free of charge, provided the Product is within its said warranty period. This warranty is in addition to other rights and remedies available to you under the law. Radio Systems goods come with guarantees that cannot be excluded under the Australia Consumer Law. You are entitled to a replacement or refund for a major failure and for compensation for any

other reasonably foreseeable loss or damage. You are also entitled to have the goods repaired or replaced if the goods fail to be of acceptable quality and the failure does not amount to a major failure.

Should you have any queries or require any further information, please contact our Customer Care Centre on 1800 786 608 (Australia) or 0800 543 054 (New Zealand).